

User Manual and Documentation

The Nomadix product user manuals, product documentation and support files including MIB, XML DTD and dictionary files are located at the following URL:

http://www.nomadix.com/current_releases.php

If you have any problems, please contact our technical support team at +1.818.575.2590, or email: support@nomadix.com.

This quick start document provides instructions and reference material for getting started with the Nomadix Access Gateway products, specifically the AG 2300, AG 5600, AG 5800 and Metro Bundle.

Accessory Box Contents

AG 2300

- 1 – U.S. (NEMA 5-15p) Power Cord
- 1 – EU (Schuko CEE7/7) Power Cord
- 1 – 6’ Serial Null Modem Cable
- 2 – Rack Mount Brackets
- 1 – Bumper and Screw Kit

AG 5600, AG 5800 and Metro Bundle

- 1 – U.S. (NEMA 5-15p) Power Cord
- 1 – EU (Schuko CEE7/7) Power Cord
- 1 – 6’ RJ45 – DB9 Console Cable
- 2 – Rack Mount Brackets
- 1 – Bumper and Screw Kit

Start Here

1. Unpack the Nomadix Access Gateway and place the product on a flat and stable work surface.
2. Register the gateway for support services by completing and returning the Nomadix Gateway Registration Form - hardcopy enclosed or obtain the form online at <http://www.nomadix.com/registration>.
3. Connect the power cord.
4. There are two ways to connect to the Access Gateway:
 - a. Serial Connection:
 - i. For AG 5600, AG 5800 and Metro, connect the RJ45 console cable to the product’s console port and the DB9 female to the computer. For AG 2300, connect the DB9 female-to-female (NULL) serial cable between the product’s serial interface and your computer.
 - ii. Start a HyperTerminal session to communicate with the AG via the product’s serial interface. Use the following configuration settings for your session:

Bits per Second	Data Bits	Parity	Stop Bits	Flow Control
9600	8	None	1	None

b. Subscriber-side Ethernet Connection:

- i. Connect a cross-over Ethernet cable between the product’s “subscriber port” and your computer’s Ethernet port.
- ii. Setup a SSH client to establish a SSH session to communicate with the NSE gateway via the administrative IP address after the Access Gateway finishes powering up. The administrative IP address is 172.30.30.172.

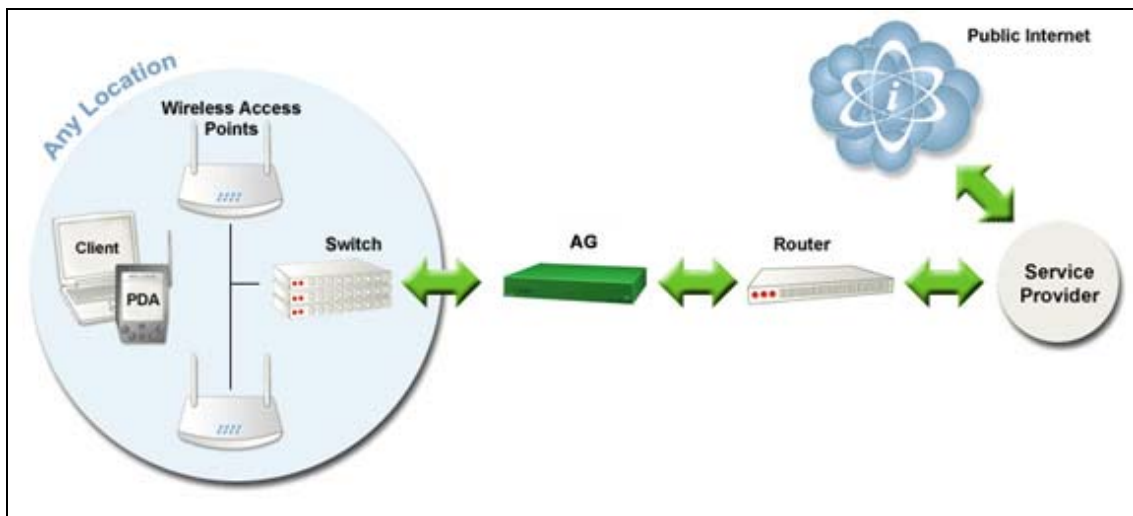
IP Address	172.30.30.173
Netmask	255.255.0.0
Gateway	172.30.30.172
DNS (If Required)	4.2.2.1

5. Power up your computer and turn on the product.

6. Log in to the Command Line interface:

The default for both the Username and Password is **admin**.

7. Go to the “Configuration” section on the next page and configure the AG for your network.



Configuration

Note: The network side of the AG must be connected to a live network that can access the Internet, or you will not be able to receive the License Key from our server (Step 3).

Step 1: Configuring IP and DNS information

Static IP Configuration

For an AG with a Static IP address, enter IP address and DNS information as shown in steps 1a and 1b.

In case the AG is configured with DHCP Client, skip to ***Step 2: Entering location information***, since the AG has already received the IP and DNS settings from the DHCP server.

Step 1a: Entering your static IP Address Information

IP Address	Your Settings	Examples
Network IP Address		10.0.0.10
Subnet Mask		255.255.255.0
Default Gateway		10.0.0.1

Step 1b: Entering Your DNS Information

DNS Parameter	Your Settings	Examples
Domain Name		nomadix.com
Host Name (<i>no spaces</i>)		nse
Primary DNS Server (<i>mandatory</i>)		198.6.1.1
Secondary DNS Server (<i>optional</i>)		198.6.1.2
Tertiary DNS Server (<i>optional</i>)		198.6.1.4

You will be asked to reboot after you enter the DNS information. Please enter (y)es when prompted to reboot.

Sample Screen Responses

IP and DNS Parameters

```

Login: admin
Password: *****

NO LICENSE KEY HAS BEEN ENTERED. A LICENSE KEY MUST BE ENTERED
IN ORDER TO PROCEED WITH INSTALLATION.
SEE USER'S GUIDE FOR LICENSE KEY INFORMATION.

INSTALLATION WILL NOW TRY TO CONTACT THE NOMADIX LICENSE KEY SERVER.
IN ORDER TO PROCEED, THE NSE MUST BE ABLE TO CONNECT TO THE INTERNET.

DO YOU WANT TO CONFIGURE THE NSE'S IP AND DNS SETTINGS? [yes/no]: y

Select the Network Interface Configuration Mode:
0 - Static
1 - DHCP Client
2 - PPPoE Client

Select the Network Interface Configuration Mode      [0]: 0
Enter network interface IP      [10.0.0.10      ]: 192.168.1.10
Enter subnet mask               [255.255.255.0   ]:
Enter default gateway IP       [10.0.0.1     ]: 192.168.1.254

NOTE: If DHCP Client or PPPoE Client is enabled, the Primary and
Secondary DNS Server may not be configured, since the DHCP/PPPoE server
may provide those items. Furthermore, if DHCP Client is configured, the
Domain may not be configured.

Enter domain                    [nomadix.com    ]:
Enter host name (no spaces)     [nse      ]:
Enter primary DNS               [0.0.0.1    ]: 198.6.1.1
Enter secondary DNS             [0.0.0.0    ]: 0.0.0.0
Enter tertiary DNS              [198.6.1.2   ]:

The system must be rebooted to function properly.
Reboot? [yes/no]: █

```

PPPoE Client Configuration

For an AG with network configuration set to PPPoE client, enter DNS information as shown in step 1c and PPPoE client configuration information as shown in step 1d.

Please note that in case of PPPoE client, only the tertiary DNS server is configurable. It is assumed that the Primary and Secondary DNS servers are provided by the PPPoE server.

Step 1c: Entering your DNS Information

DNS Parameter	Your Settings	Examples
Domain Name		nomadix.com
Host Name (<i>no spaces</i>)		nse
Primary DNS Server (<i>not configurable</i>)		
Secondary DNS Server (<i>not configurable</i>)		
Tertiary DNS Server (<i>optional</i>)		198.6.1.2

Step 1d: Entering your PPPoE Information

PPPoE Parameter	Your Settings	Examples
PPPoE Service Name		NSE
Echo Request Interval		30
Maximum non-responses		6
Authentication Username		Test
Authentication Password		Test

Select the PPP IP address configuration mode. If you select Dynamic, the IP address will be automatically assigned by the PPP server. If you select Static, please enter the IP address.

TCP maximum MSS		1452
-----------------	--	------

Sample Screen Responses

DNS Parameters and PPPoE Configuration

```

Select the Network Interface Configuration Mode:

0 - Static
1 - DHCP Client
2 - PPPoE Client

Select the Network Interface Configuration Mode      [0]: 2

NOTE: If DHCP Client or PPPoE Client is enabled, the Primary and
Secondary DNS Server may not be configured, since the DHCP/PPPoE server
may provide those items. Furthermore, if DHCP Client is configured, the
Domain may not be configured.

Domain                nonadix.com
Host Name             nse
Primary DNS           198.6.1.1
Secondary DNS         0.0.0.0
Tertiary DNS          198.6.1.2

Enter domain          [nonadix.com   ]:
Enter host name (no spaces) [nse       ]:
Enter tertiary DNS     [198.6.1.2   ]:
PPPoE Service Name (or "none") [nse       ]:
PPP echo-request interval [30        ]:
PPP maximum non-responses [6         ]:
PPP authentication Username (or "none") [1024     ]:
PPP authentication Password (or "none") [1024     ]:

Select the PPP IP address Configuration Mode:

0 - Dynamic
1 - Static

Select the PPP IP address Configuration Mode      [0]          ]:
TCP maximum MSS                                  [1452       ]:

PPPoE Service Name                nse
PPP Keep-Alive;
  Echo-Request Interval            30
  Maximum Non-responses            6
PPP Authentication;
  User Name                        1024
  Password                          1024
IP Configuration Mode              Dynamic
Static IP Address                  0.0.0.0
Maximum TCP MSS                    1452

The system must be rebooted to function properly.
Reboot? [yes/no]:

```

You will be asked to reboot after you enter this information. Please enter (y)es when prompted to reboot.

Step 2: Entering Your Location Information

When the system powers up, you will be asked to input location information.

Location Information	Your Settings	Examples
Company Name (<i>mandatory</i>)		Nomadix, Inc.
Site Name (<i>mandatory</i>)		Headquarters
Address (<i>2 lines</i>)		30851 Agoura Road
City (<i>mandatory</i>)		Agoura Hills
State (<i>mandatory</i>)		California
Zip		91301
Country (<i>mandatory</i>)		USA
Email Address (<i>mandatory</i>)		nomad@nomadix.com
Venue Type (<i>mandatory</i>)		Corporate Guest Access
ISO Country Code		US
Phone Country Code		1
Calling Area Code		818
Network SSID/ZONE		NDHQ

Step 3: Retrieving Your License Key

When you have entered your IP Addresses, DNS and Location information, the system will prompt you to accept or decline the End User License Agreement (EULA). You must accept the terms of the EULA before the AG can retrieve its License Key.

To retrieve the License Key, enter **y[es]** at the prompt.

The AG retrieves the License Key from the Nomadix License Key Server, then reboots.

NOTE: The date and time the gateway receives a valid license from our server for the first time is considered the Software License Subscription start date.

Step 4: Configuring the System

Log in to the AG and use the graphical Web Management Interface (WMI) to configure the product's features. You have now established a basic configuration for the AG that enables "Plug and Play" Internet connectivity.

For additional information about the available AG features, refer to Chapter 2 of the User Guide specific to your AG. For example:

- ❑ To establish various billing and authentication methods, see *Defining the AAA Services*.

- ❑ To establish hotel billing, see *Assigning a PMS Service*.

Step 5: Configuring AG DHCP Server Settings

DHCP Server is enabled by default. To configure the DHCP Server, go to DHCP under the Configuration menu. You can either modify the default DHCP pool or delete/add another DHCP pool. The total lease pool size recommendation is 50% more than the number of licensed subscribers.

DHCP Parameter	Your Settings	Examples
DHCP Services (Disable)		no
DHCP Relay (Yes / No) <i>If No, skip to DHCP Server</i>		no
DHCP Relay Server IP Address		blank
DHCP Relay Agent IP Address		Blank
DHCP Server (Yes / No) Only if the DHCP Relay is disabled		yes
DHCP Server IP Address		10. 0. 0.4
DHCP Server Subnet Mask		255.255.255.0
DHCP Pool Start IP Address		10.0.0.12
DHCP Pool End IP Address		10.0.0.72
DHCP Lease Minutes		1440