



Nomadix Access Gateway Reference Architecture for Hotspots

Copyright © 2011 Nomadix, Inc. All Rights Reserved.

Introduction

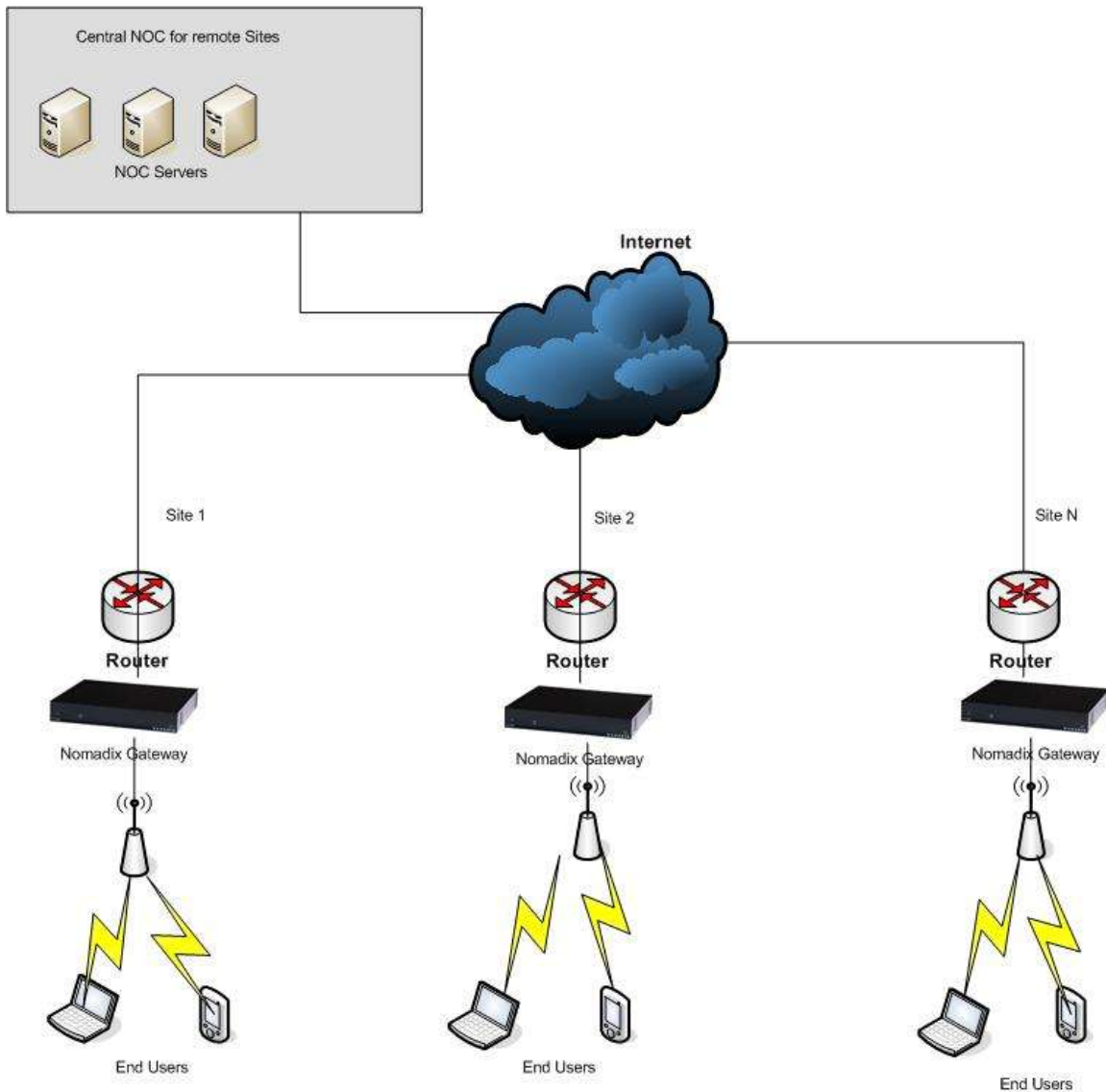
Providing cost-effective and profitable wired and wireless (Wi-Fi) public access means HotSpot owners need to provide any user access to the service

Nomadix offers its Nomadix Service Engine (NSE) software embedded on our family of Access Gateways. The NSE offers a full suite of functionality designed for deployment in public access networks allowing network operators to deploy a secure, revenue-producing service. The Nomadix solution resolves issues of connectivity, security, billing and roaming that are created when deploying these Wi-Fi networks.

Nomadix suggests two options when deploying multiple HotSpots centrally managed. The first Architecture is based on a separate Nomadix device at each location at the edge. This provides complete management control of the end user and their access to the Hotspot. The Second Architecture provides the Central control system to be setup and a single Nomadix Device to be deployed at a central location to handle multiple HotSpots.

White Paper

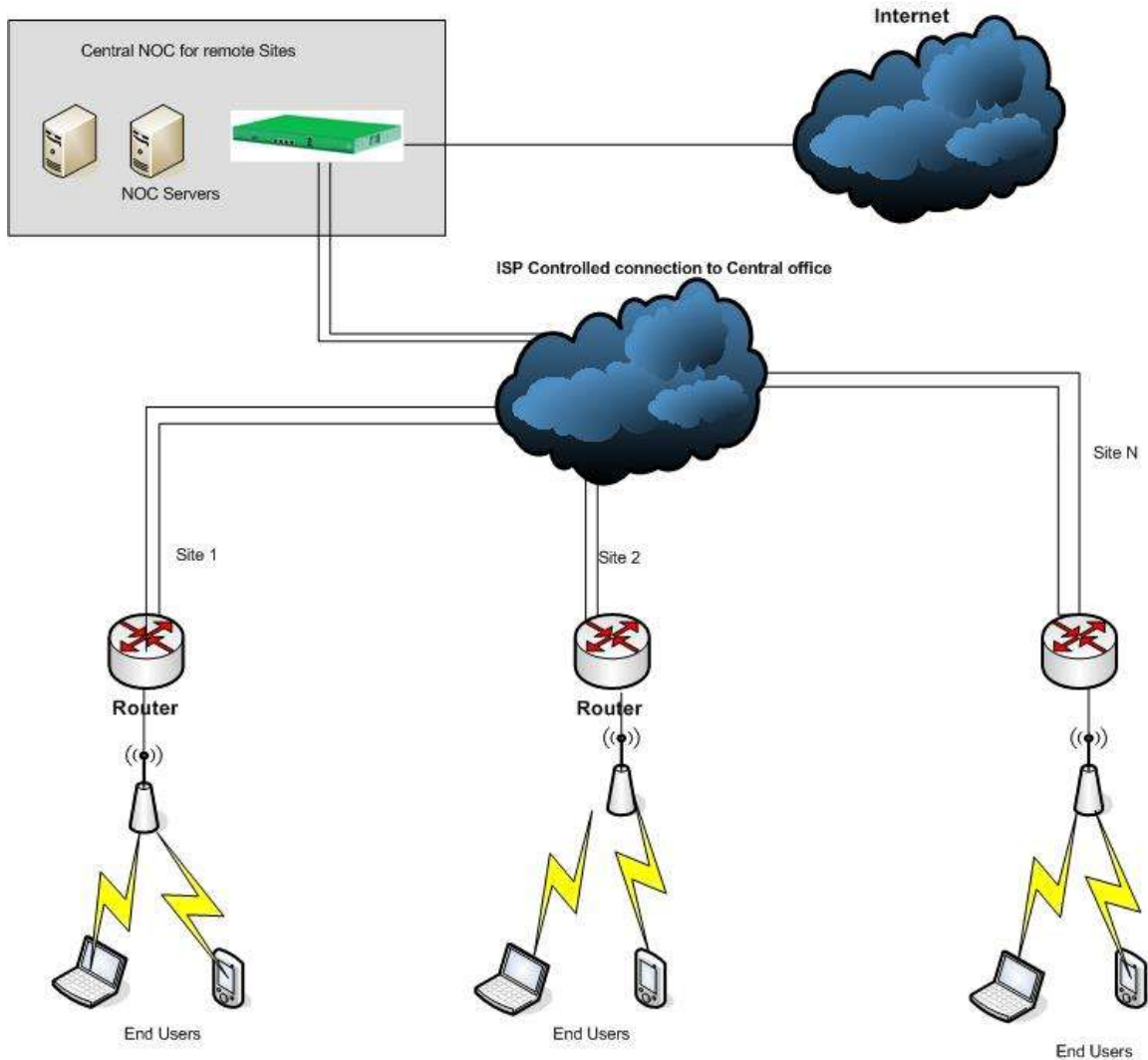
Architecture 1:



In this Scenario each hotspot consists of a simple Router, Nomadix Gateway and the Access Points required for the site. All of these devices can be managed and monitored from a central location based on the configurations needed. The HotSpots can also be linked together with the same Radius database. Either similar or different Portal Pages could be utilized for each HotSpot as well.

White Paper

Architecture 2:



In this Scenario All Traffic from each HotSpot site can either be tunneled back to a Central location or needs to be controlled and directed back to the central location by utilizing the connection from the different HotSpots to the Central office. All Traffic must flow through the Nomadix to the outside Internet connection without any other route to the outside before going through the Nomadix. This scenario allows for more central control of all traffic and still allows the flexibility of multiple sites being managed at that central system.