



Purpose: To enable IP Upsell and how to assign a public address to the user. In order to use IP Upsell, AAA must be enabled.

In order to assign a user a public address using IP Upsell, the user must have DHCP enabled on their PC.

Step 1: Set the pool (Private) for IP Upsell

Click on private pool Server-IP address, 10.0.0.4 in the example below. Check IP Upsell option and click Modify.

Note: You may change the pool to any other desired network/subnet (192.168.1.0 For example) and click “Modify”

DHCP Settings

Enable this DHCP Pool

DHCP Server IP

DHCP Server Netmask

DHCP Pool Start IP i

DHCP Pool Stop IP

DHCP Lease Minutes

Router: DHCP Server IP Specify:

Public Pool Private Pool IP Upsell Pool Default Pool



Step 2: Add a new pool (public)

Enter the IP addresses that are available (not used by any other devices) on your network, specify lease time, check Public Pool and IP Upsell Pool options as it shows on the example below and click Add.

Note: IP addresses have to be on the same network/subnet as the Nomadix gateway.

DHCP Settings

Enable this DHCP Pool

DHCP Server IP

DHCP Server Netmask

DHCP Pool Start IP ⓘ

DHCP Pool Stop IP

DHCP Lease Minutes

Router: DHCP Server IP Specify:

Public Pool Private Pool IP Upsell Pool Default Pool



Step 3: Complete IP Upsell configuration

Enable IP Upsell and check Save to enable. **NOTE:** Subnet-based DHCP will be enabled when you enable IP Upsell.

In the picture below it shows two (2) DHCP pools, 1 Private and 1 Public. Both set to IP Upsell (YES)

DHCP Settings

DHCP Services: Disabled Relay Server

DHCP Relay Parameters:

DHCP Server IP

DHCP Relay Agent IP ⓘ

Relay Agent Information (option 82) »

DHCP Server Parameters: Subnet-based IP-Upsell Forwarded DHCP Client

Existing DHCP Pools

Enabled	Server-IP	Server-Netmask	Start-IP	End-IP	Lease	IP Type	IP-Upsell	Default Pool	# Options
YES	10.0.0.4	255.255.255.0	10.0.0.12	10.0.0.50	1440	PRIVATE	YES	YES	2
YES	67.130.149.161	255.255.255.224	67.130.149.181	67.130.149.182	60	PUBLIC	YES	NO	0

Total number of pools: 2 (200 allowed)
 Total number of leases: 41 (25000 allowed)

 Click here to add a new DHCP Pool.



With IP Upsell, the lease time will be set to match the amount of time purchased for the user and not based on the lease pool setting. If you want the lease time to match the lease time configured for the DHCP pool instead of the service plan, then you will need to disable the “Upsell Lease – Session Time” setting. This can only be done through the command line interface. Connect via telnet or the serial interface and go to Configuration then DHCP.

```
Server Enabled?           [Enabled  ] : en
IP Upsell                 [Disabled] : en
Subnet Based              [Disabled] : dis
Forwarded DHCP Clients    [Disabled] : dis
Upsell Lease = Session Time [Enabled  ] : dis
```

Internal Database – when creating the user profile, you can select Private or Public for the DHCP Address Type.

Add a Subscriber Profile to the Database

Subscriber Device Group Account

DHCP Address Type

Private Public 

Only used if subscriber is configured for DHCP



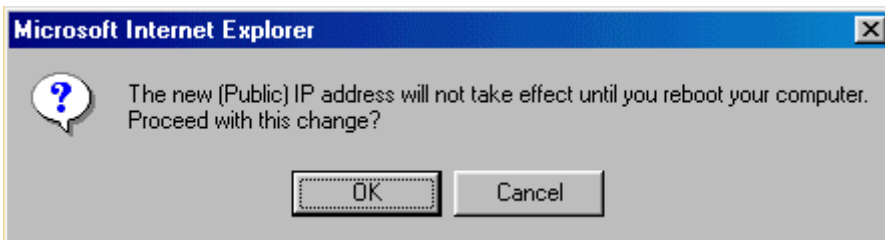
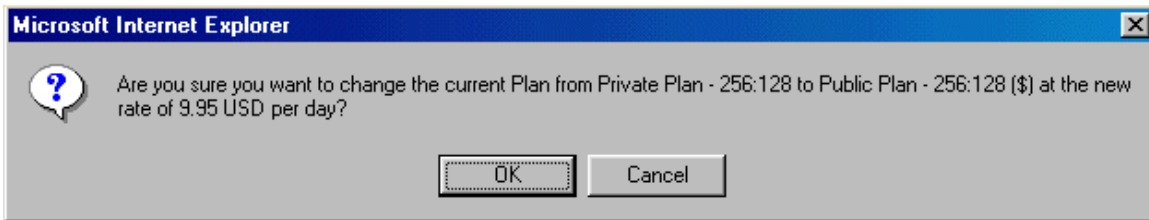
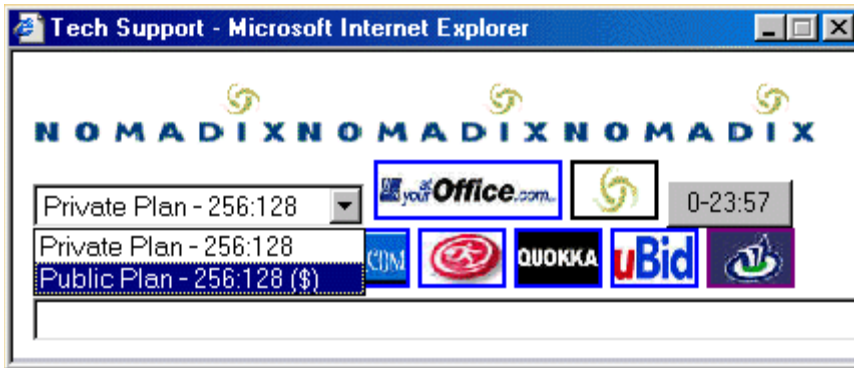
Internal Web Server Billing Options - set for Public and Private Plans

Internal Billing Options Plan Setup		Internal Billing Options Plan Setup	
Plan	0	Plan	1
Enable	<input checked="" type="checkbox"/>	Enable	<input checked="" type="checkbox"/>
Label	<input type="text" value="Private Plan"/>	Label	<input type="text" value="Public Plan"/>
Description of Service	<input type="text" value="256K downstream, 128K upstream"/>	Description of Service	<input type="text" value="IPUPsell"/>
Facebook Login	<input type="checkbox"/>	Facebook Login	<input type="checkbox"/>
Plan Duration	<input type="text" value="0"/>	Plan Duration	<input type="text" value="0"/>
Pricing		Pricing	
Free for PMS User	<input type="checkbox"/> ⓘ	Free for PMS User	<input type="checkbox"/> ⓘ
Rate Per Minute	<input type="text" value="0.00"/>	Rate Per Minute	<input type="text" value="0.00"/>
Rate Per Hour	<input type="text" value="0.00"/>	Rate Per Hour	<input type="text" value="0.00"/>
Rate Per Day	<input type="text" value="0.00"/>	Rate Per Day	<input type="text" value="9.95"/>
Rate Per Week	<input type="text" value="0.00"/>	Rate Per Week	<input type="text" value="0.00"/>
Rate Per Month	<input type="text" value="0.00"/>	Rate Per Month	<input type="text" value="0.00"/>
Time Unit		Time Unit	
Minute	<input type="radio"/>	Minute	<input type="radio"/>
Hour	<input type="radio"/>	Hour	<input type="radio"/>
Day	<input checked="" type="radio"/>	Day	<input checked="" type="radio"/>
Week	<input type="radio"/>	Week	<input type="radio"/>
Month	<input type="radio"/>	Month	<input type="radio"/>
Wired for Business	<input type="checkbox"/>	Wired for Business	<input type="checkbox"/>
Bandwidth		Bandwidth	
Maximum Uplink	<input type="text" value="2048"/>	Maximum Uplink	<input type="text" value="2048"/>
Maximum Downlink	<input type="text" value="5120"/>	Maximum Downlink	<input type="text" value="5120"/>
QoS Policy	<input type="text" value="(no policy)"/>	QoS Policy	<input type="text" value="(no policy)"/>
DHCP Pool		DHCP Pool	
Private	<input checked="" type="radio"/>	Private	<input type="radio"/>
Public	<input type="radio"/> ⓘ	Public	<input checked="" type="radio"/> ⓘ
Class	<input type="text" value="(none)"/>	Class	<input type="text" value="(none)"/>
<input type="button" value="Save this Plan"/> <input type="button" value="Delete this Plan"/> <input type="button" value="Clear"/>		<input type="button" value="Save this Plan"/> <input type="button" value="Delete this Plan"/> <input type="button" value="Clear"/>	

Radius – add the Nomadix-IP-Upsell to your dictionary and Nomadix-IP-Upsell = 1 attribute to the subscriber's profile



Information and Control Console (ICC) – With the ICC enabled and a Public and Private billing plan enabled, a user who originally purchased a private plan can upgrade their plan to a public one.



XML - By adding the IP_Type attribute to the User_Add command, you can assign either a private or public address for the subscriber.

`</IP_Type>PUBLIC</IP_Type>` - allows the subscriber to receive a public DHCP lease.