



Purpose: To configure Windows 2003 Advanced Server's Radius to communicate with the NSE

Step 1: Adding the NSE as a client in the Internet Authentication Service.

Open the Internet Authentication Service, right click on Radius Clients and select New Radius Client.

A screenshot of the 'New RADIUS Client' dialog box. The title bar reads 'New RADIUS Client'. The main area is titled 'Name and Address' and contains the instruction: 'Type a friendly name and either an IP Address or DNS name for the client.' There are two input fields: 'Friendly name:' with the value 'USG' and 'Client address (IP or DNS):' with the value '10.0.0.10'. A 'Verify...' button is located to the right of the client address field. At the bottom of the dialog are three buttons: '< Back', 'Next >', and 'Cancel'.

Enter in the name and IP address you wish to assign for this client and select Next.



Step 2: Creating the Radius Client .

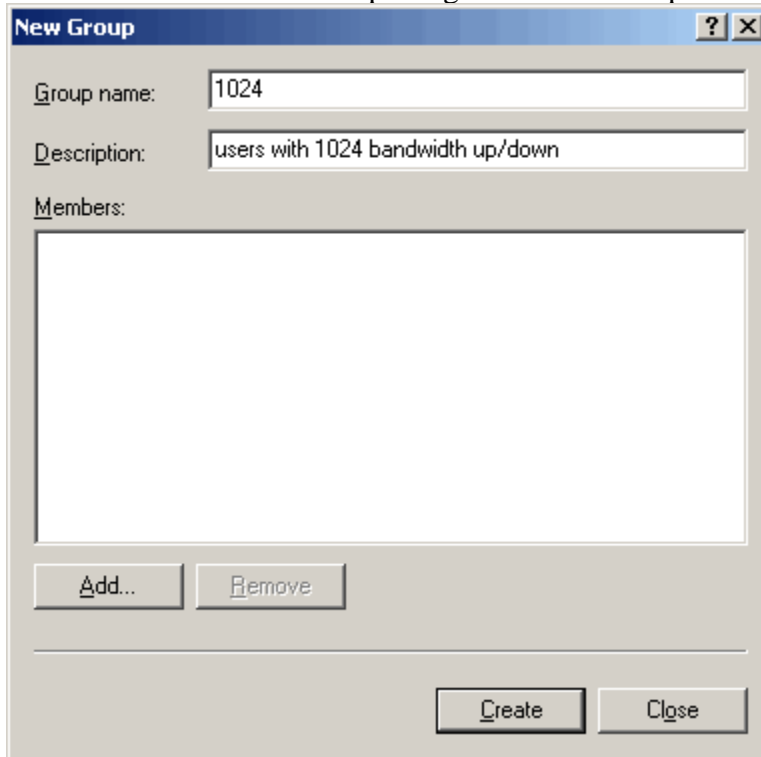
For Client-Vendor, select Radius Standard and enter in the shared secret. This will be the same Secret Key you configured in the NSE's Radius Options section.

A screenshot of a Windows-style dialog box titled 'New RADIUS Client'. The dialog has a blue title bar with a close button (X) in the top right corner. Below the title bar, the text 'Additional Information' is displayed. A paragraph of text reads: 'If you are using remote access policies based on the client vendor attribute, specify the vendor of the RADIUS client.' Below this, there is a 'Client-Vendor:' label followed by a dropdown menu showing 'RADIUS Standard'. Underneath are two text boxes for 'Shared secret:' and 'Confirm shared secret:', both containing a series of asterisks. At the bottom left, there is a checkbox labeled 'Request must contain the Message Authenticator attribute' which is currently unchecked. At the bottom right, there are three buttons: '< Back', 'Finish', and 'Cancel'.

Click Finish and exit the Internet Authentication Service screen.

Step 3 – Creating a New Group

To create a new group go to Programs/Administrative Tools/Computer Management and select Local Users and Groups. Right click on Groups then New Group.

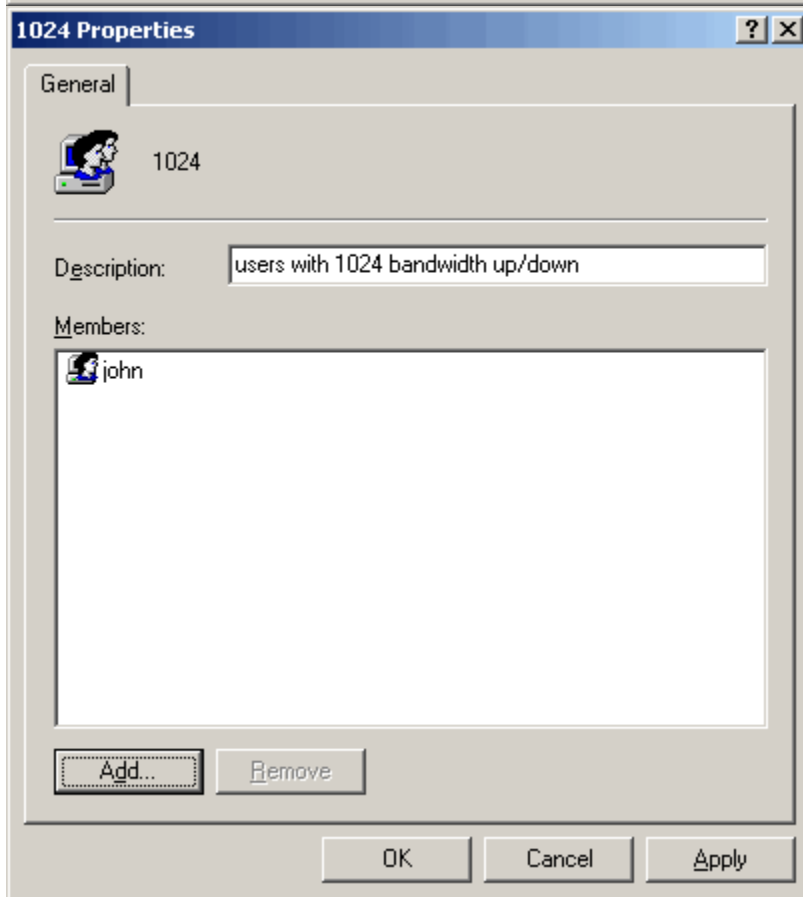
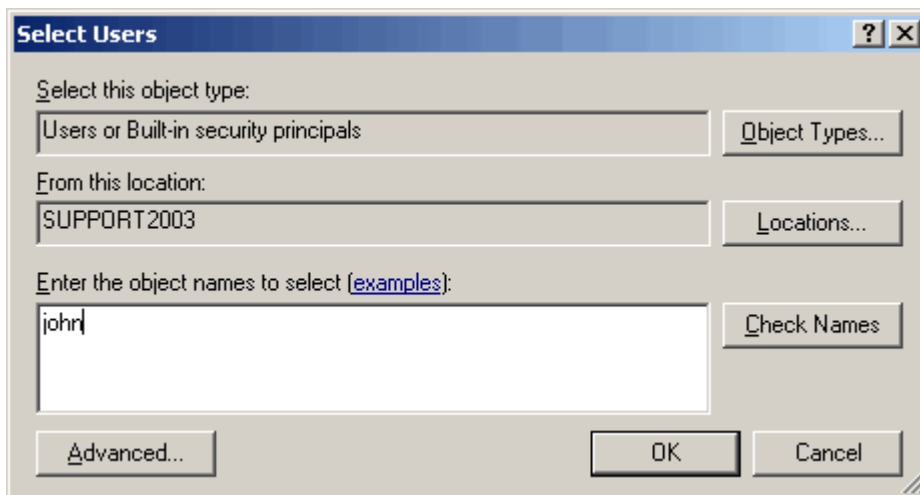


The screenshot shows a Windows XP 'New Group' dialog box. The title bar reads 'New Group' with a help icon and a close button. The dialog contains three text input fields: 'Group name:' with the value '1024', 'Description:' with the value 'users with 1024 bandwidth up/down', and 'Members:' which is an empty list box. Below the 'Members' list box are two buttons: 'Add...' and 'Remove'. At the bottom of the dialog are two buttons: 'Create' and 'Close'.

Enter in the Group name you wish to create. The Description is optional. Click on Create to create the group.

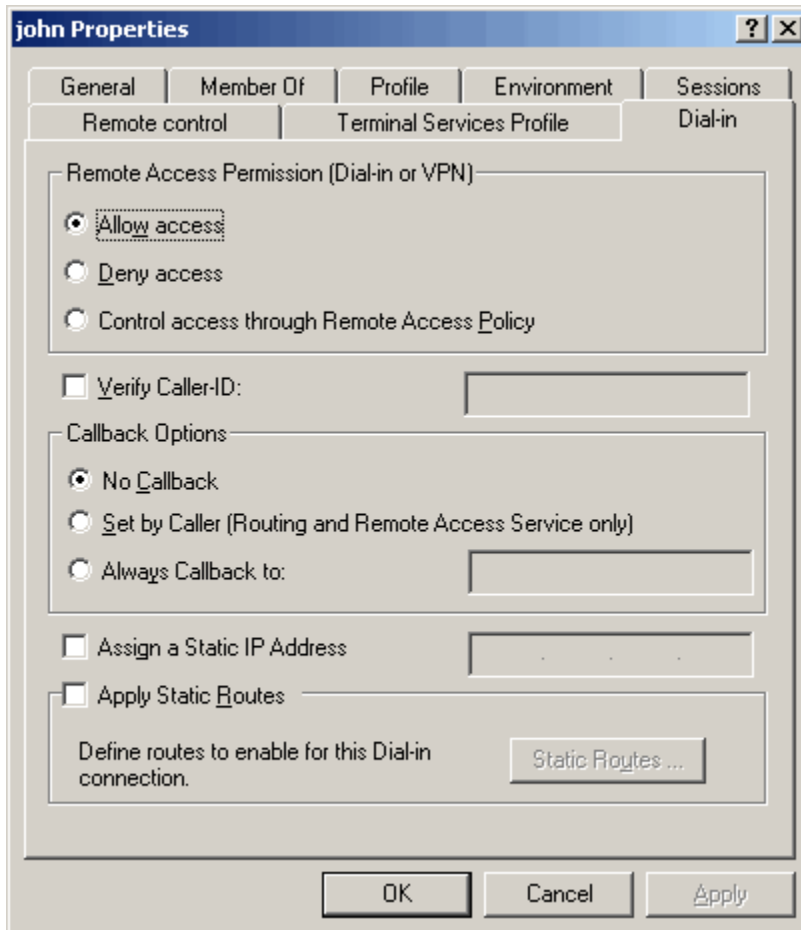
Step 4: Adding Users to the newly created group.

Right click on the group, select Properties and then Add to add a user to this group. Enter in the name of the user you wish to add to this group and then click OK to add.



Step 5: Granting access for a user.

Right click on the user, select the Dial-In tab and enable Allow Access and No Callback.





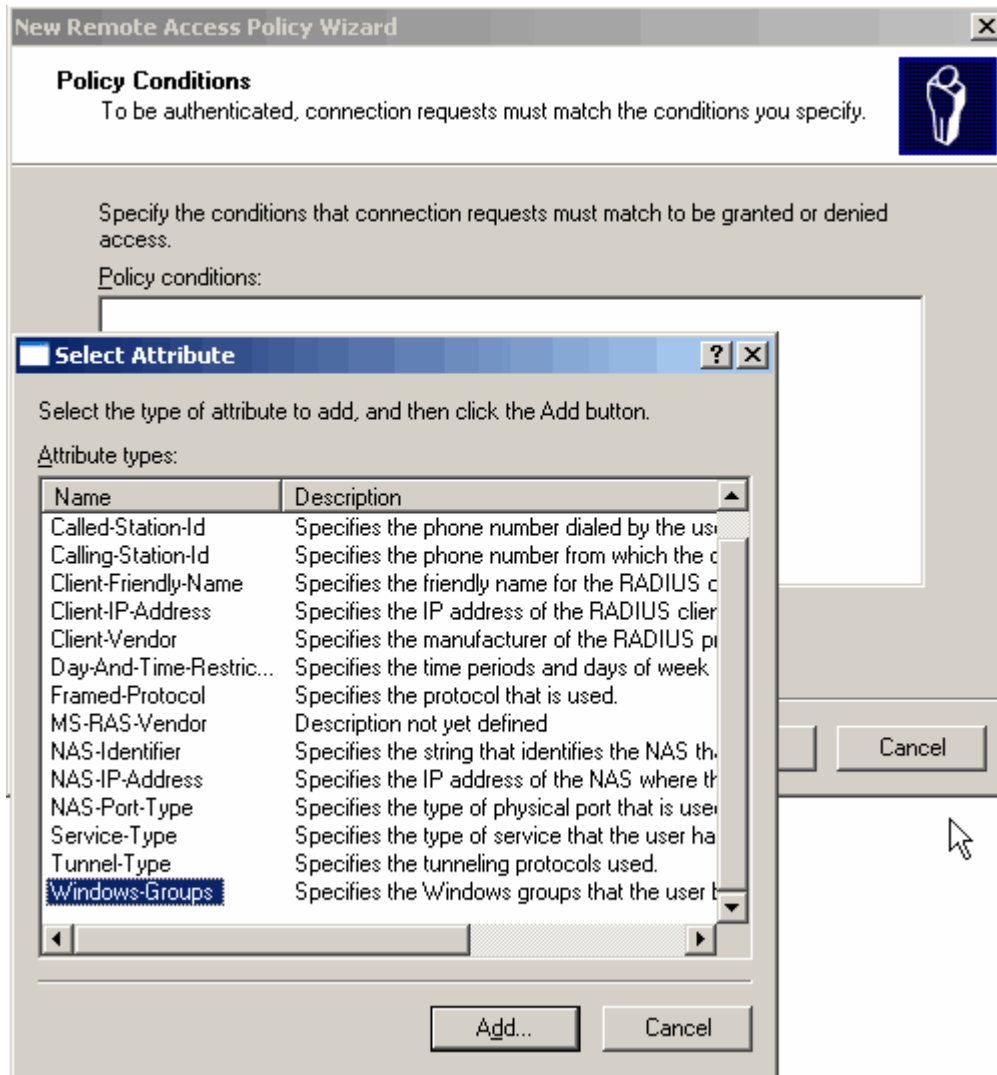
Step 6: Creating the Remote Access Policy.

Open Internet Authentication Service and right click on Remote Access Policies. This will open the New Remote Access Policy Wizard. Select Set up a custom policy and enter in a name.

A screenshot of the 'New Remote Access Policy Wizard' dialog box. The title bar reads 'New Remote Access Policy Wizard'. The main area is titled 'Policy Configuration Method' and contains the text: 'The wizard can create a typical policy, or you can create a custom policy.' Below this, the question 'How do you want to set up this policy?' is followed by two radio button options: 'Use the wizard to set up a typical policy for a common scenario' (unselected) and 'Set up a custom policy' (selected). A text prompt asks 'Type a name that describes this policy.' Below this is a text input field with '1024' entered. An example text below the field reads 'Example: Authenticate all VPN connections.' At the bottom, there are three buttons: '< Back', 'Next >', and 'Cancel'.

Select Next to continue.

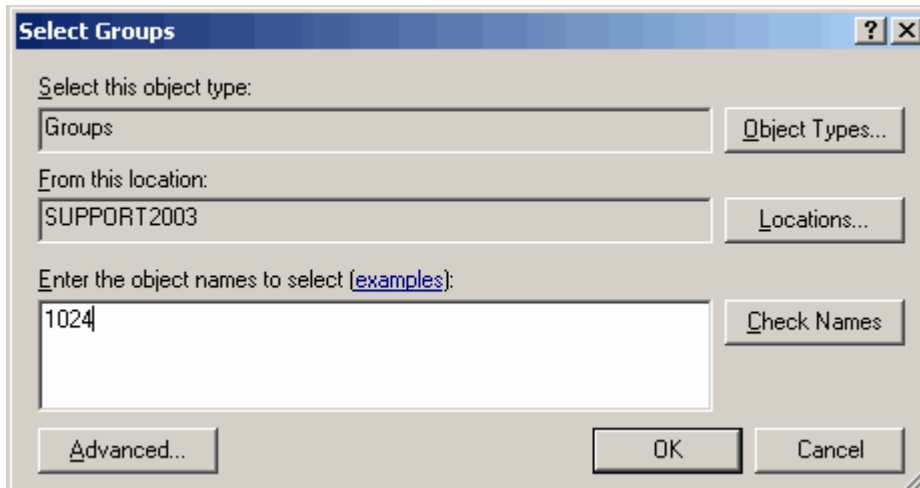
Select Add on the Policy Conditions screen and choose Windows Groups.



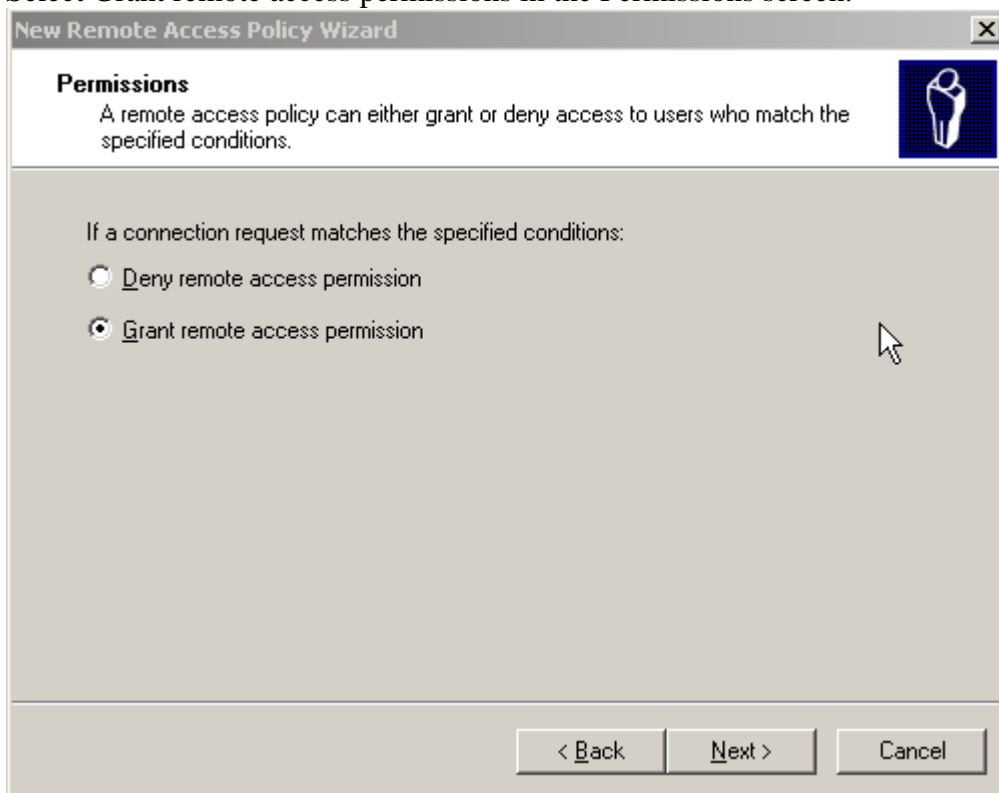
Select Add to bring up the Select Groups screen.



Enter in the name of the Group you wish to add and click OK then OK again to add and then Next to go to the next step.

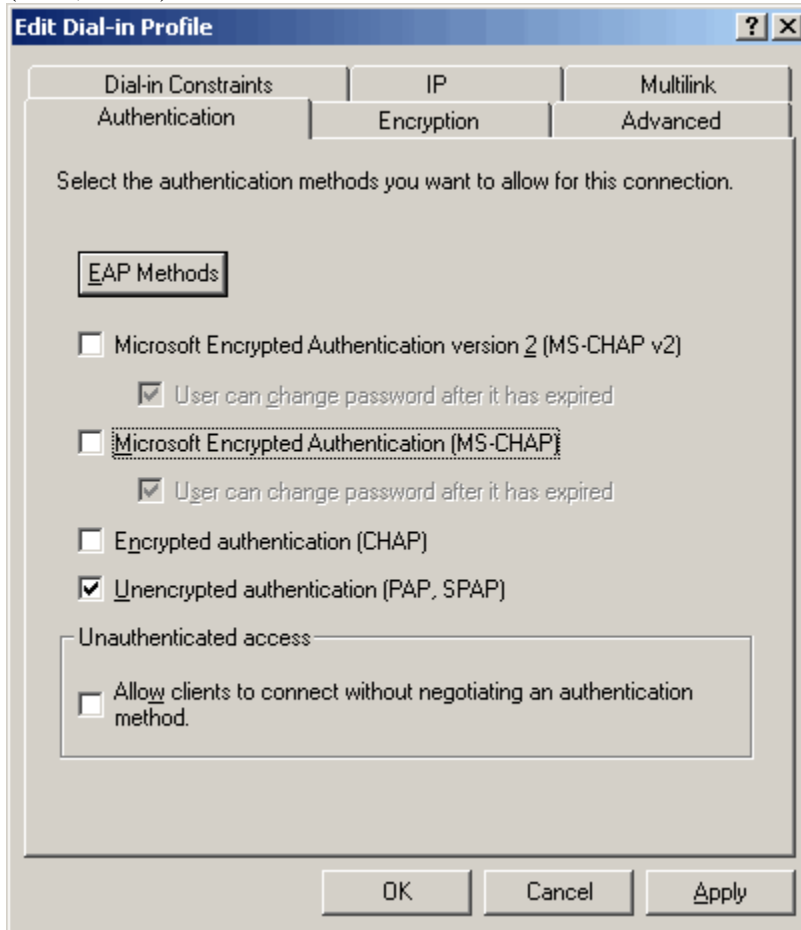


Select Grant remote access permissions in the Permissions screen.



Click Next to continue to the Profile screen.

Select Edit Profile then the Authentication Tab and select Unencrypted authentication (PAP,SPAP)





Step 7: Creating the Nomadix Vendor-Specific Attributes.

Click on Advanced and then Add. Select Vendor Specific from the list.

The screenshot shows a dialog box titled "Multivalued Attribute Information" with a standard Windows window title bar (minimize, maximize, close buttons). The dialog contains the following fields and controls:

- Attribute name:** A text box containing "Vendor-Specific".
- Attribute number:** A text box containing "26".
- Attribute format:** A text box containing "OctetString".
- Attribute values:** A table with two columns: "Vendor" and "Value". The table is currently empty.
- Buttons:** To the right of the table are five buttons: "Move Up", "Move Down", "Add", "Remove", and "Edit".
- Footer:** At the bottom of the dialog are "OK" and "Cancel" buttons.



Click Add to create the Vendor Specific Attribute. For each of the Nomadix Vendor-Specific Attributes, enter 3309 as the vendor code and Yes, it conforms.

A screenshot of a Windows dialog box titled "Vendor-Specific Attribute Information". The dialog has a standard title bar with a question mark and a close button. The main area contains the following fields and options:

- "Attribute name:" with a text box containing "Vendor-Specific".
- "Specify network access server vendor." with two radio buttons:
 - Select from list: followed by a dropdown menu showing "RADIUS Standard".
 - Enter Vendor Code: followed by a text box containing "3309".
- "Specify whether the attribute conforms to the RADIUS RFC specification for vendor specific attributes." with two radio buttons:
 - Yes. It conforms.
 - No. It does not conform.
- A button labeled "Configure Attribute..."

At the bottom of the dialog are "OK" and "Cancel" buttons.

Click on Configure Attribute to create each attribute you wish to assign to the group.



Nomadix-Bandwidth-Up

The dialog box is titled "Configure VSA (RFC compliant)" and contains the following fields and controls:

- Vendor-assigned attribute number:** A text input field containing the value "1".
- Attribute format:** A dropdown menu currently set to "Decimal".
- Attribute value:** A text input field containing the value "1024".
- Buttons:** "OK" and "Cancel" buttons are located at the bottom right of the dialog.

Nomadix-Bandwidth-Down

The dialog box is titled "Configure VSA (RFC compliant)" and contains the following fields and controls:

- Vendor-assigned attribute number:** A text input field containing the value "2".
- Attribute format:** A dropdown menu currently set to "Decimal".
- Attribute value:** A text input field containing the value "1024".
- Buttons:** "OK" and "Cancel" buttons are located at the bottom right of the dialog.