



**Purpose: To enable authentication with Lucent NavisRadius 3 or 4**

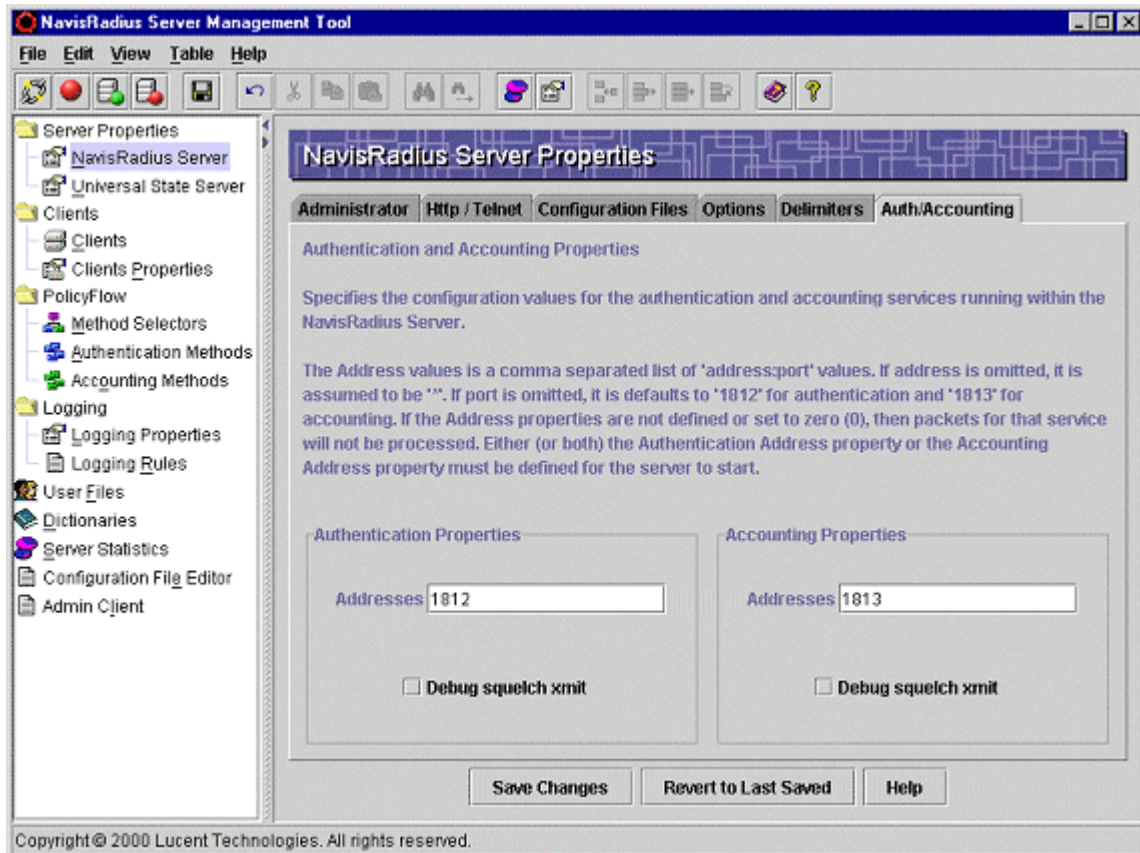
**Step 1: Connect to NavisRadius**

Connect to NavisRadius by going to Program Files/NavisRadius 3.2.3/Server Management Tool. Login as admin:admin (by default) and select Connect locally (not to SMT Server).

A screenshot of a Windows-style dialog box titled 'Connect Information'. The dialog has a blue header bar with a close button (X) on the right. It contains three text input fields: 'User Name' with the text 'admin', 'Password' with six asterisks '\*\*\*\*\*', and 'Host' which is empty. Below these fields is a checked checkbox labeled 'Connect locally (not to SMT Server)'. At the bottom of the dialog are two buttons: 'Connect' and 'Cancel'.

## Step 2: Configuring Authentication and Accounting Properties.

To configure Authentication/Accounting Properties go to **NavisRadius Server** then the **Auth/Accounting** tab on the right side. Choose ports **1812** for authentication and **1813** for Accounting and **Save Changes**

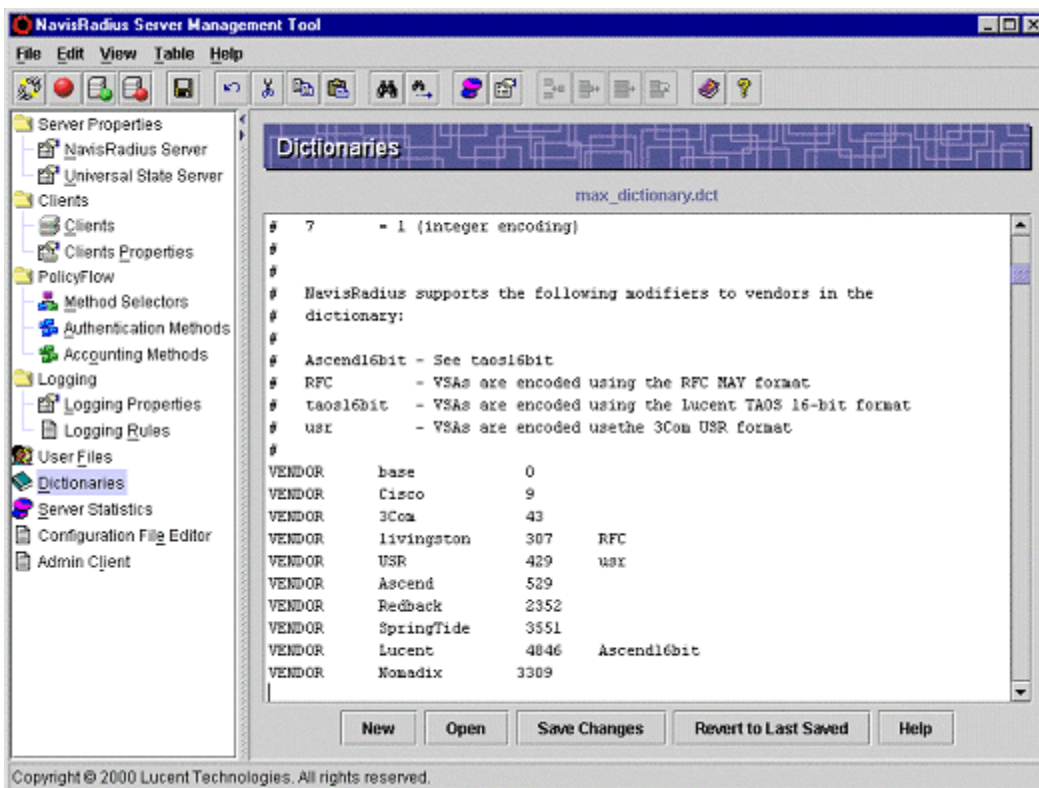




### Step 3: Configuring Vendor information.

To Configure the Vendor information, Go to the **Dictionary** menu/**Open** and choose an existing one (max\_dictionary.dct). If you do not have existing dictionary then select **New** and add the following vendor code.

“VENDOR    Nomadix        3309”



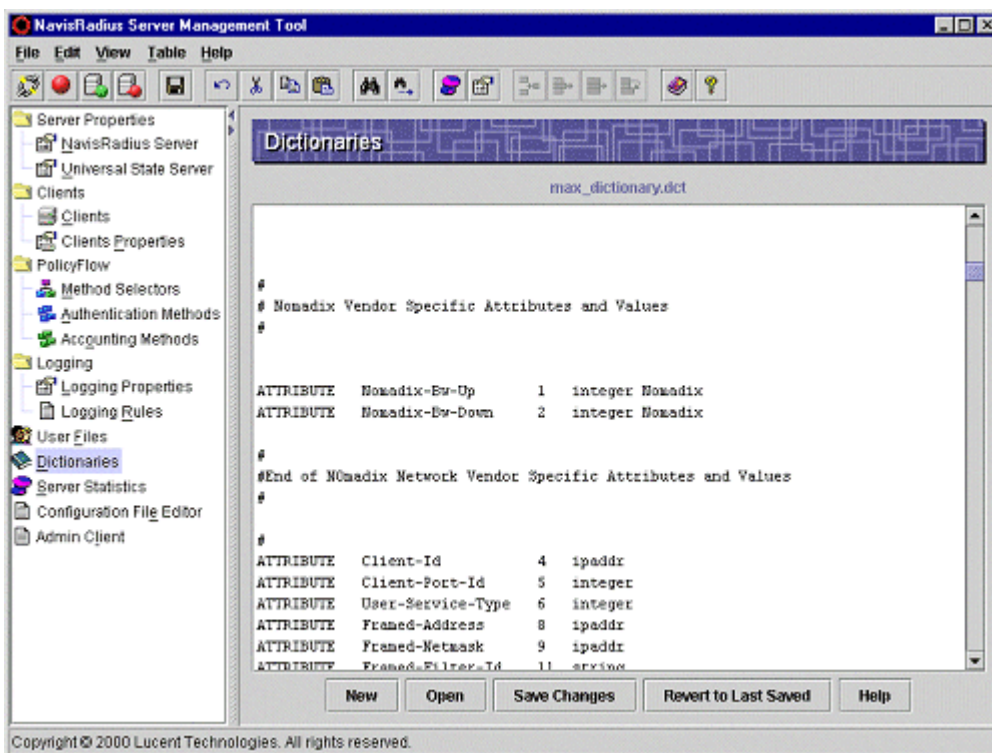


#### Step 4: Adding the Nomadix Vendor Specific Attributes.

To add the Nomadix Vendor Specific Attributes, add the following in the same Dictionary file

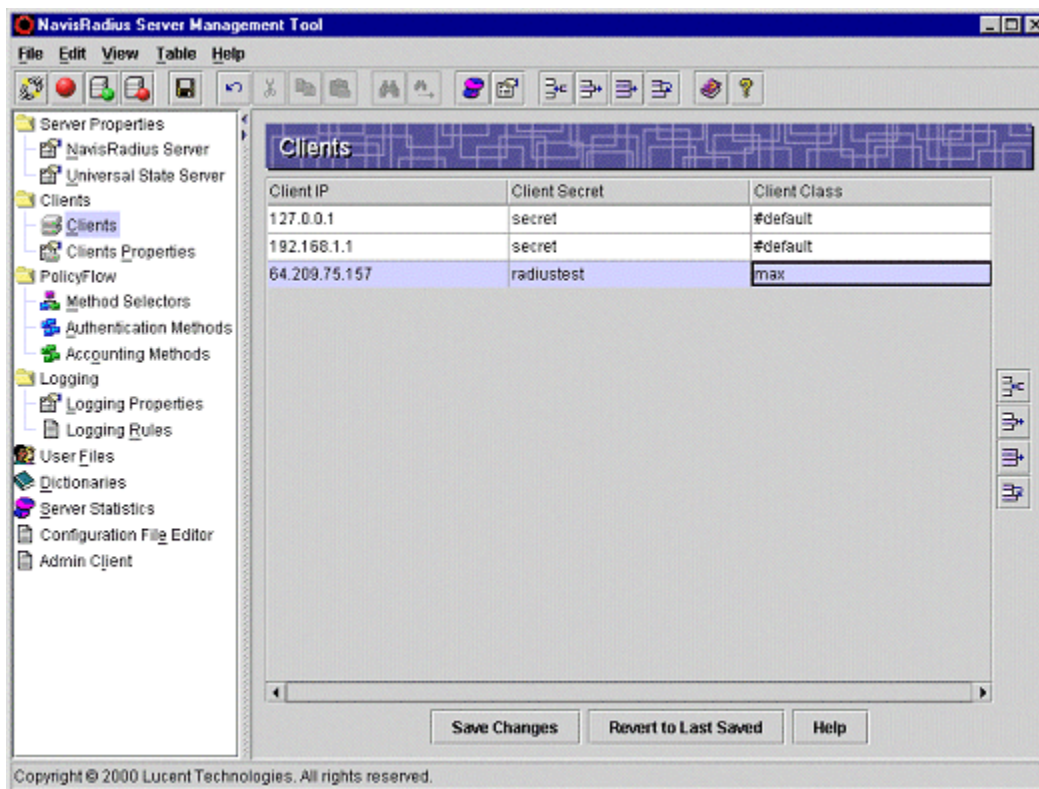
```
ATTRIBUTE Nomadix-Bw-Up      1 integer Nomadix
ATTRIBUTE Nomadix-Bw-Down    2 integer Nomadix
ATTRIBUTE Nomadix-Url-Redirection 3 string  Nomadix
ATTRIBUTE Nomadix-Ip-Upsell   4 integer  Nomadix
```

**Save Changes** when done



### Step 5: Add the NSE as a Client

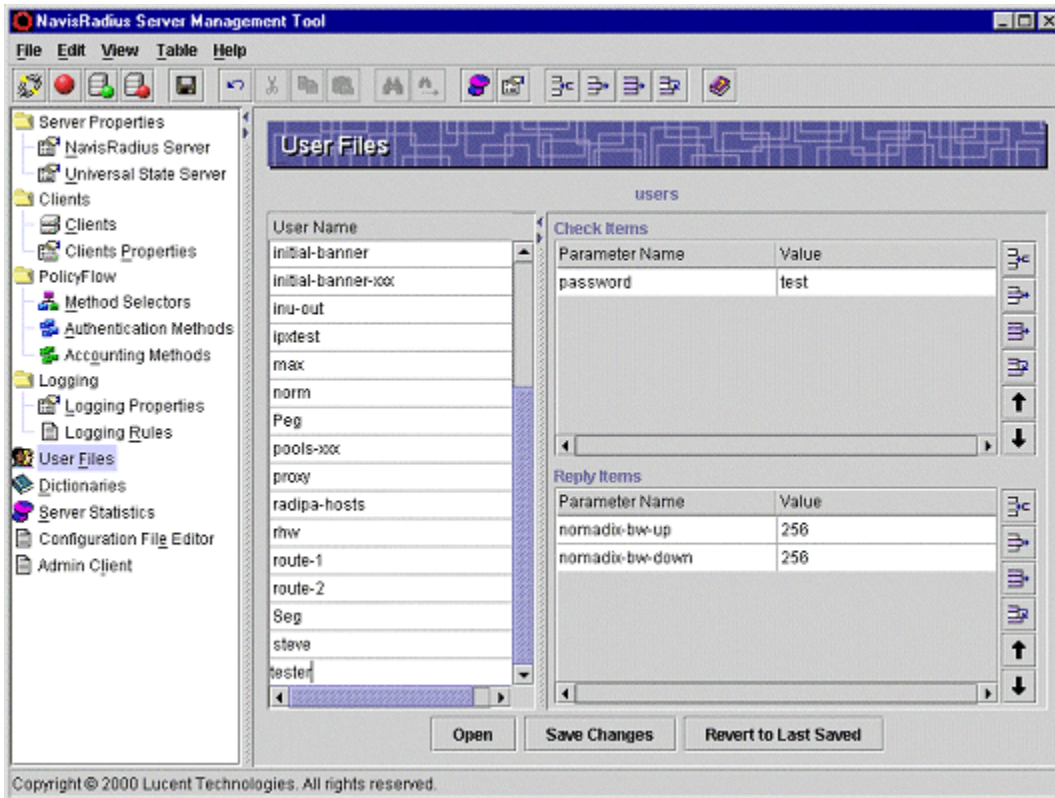
To add the NSE as a NAS Client, go to Clients and Add Client IP- NSE IP and Secret Key. For Client Class, select the Dictionary name that you modified in the previous step.





**Step 6: Adding the Nomadix Vendor Specific Attributes to a user profile.**

To add a User with Nomadix attributes, go to User Files and add a user. In Reply Items, add the attributes you wish to assign to this user.



**Step 7: Start the NavisRadius server.**

If the server is not already started, start the NavisRadius Server.

